

ipbes

Assessment Report on the Sustainable Use of Wild Species

www.ipbes.net

The Intergovernmental Science-Policy Platform
on Biodiversity & Ecosystem Services



#SustainableUse Assessment





1 ■ Why is this assessment important





50,000 Wild Species Meet Needs of Billions Worldwide
Experts Offer Options to Ensure Sustainable Use

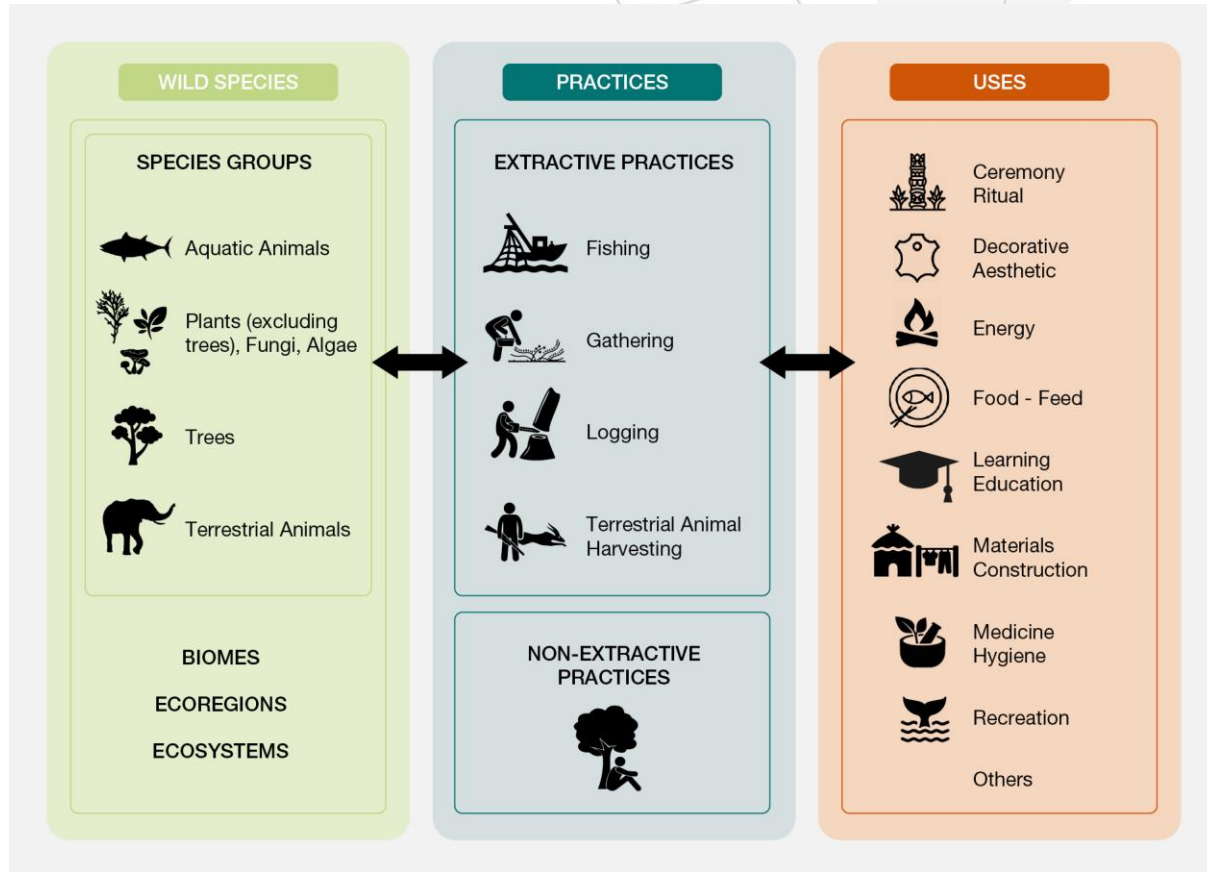
1 in 5 People Rely on Wild Species for Income & Food

>10,000 Wild Species Harvested for **Human Food**

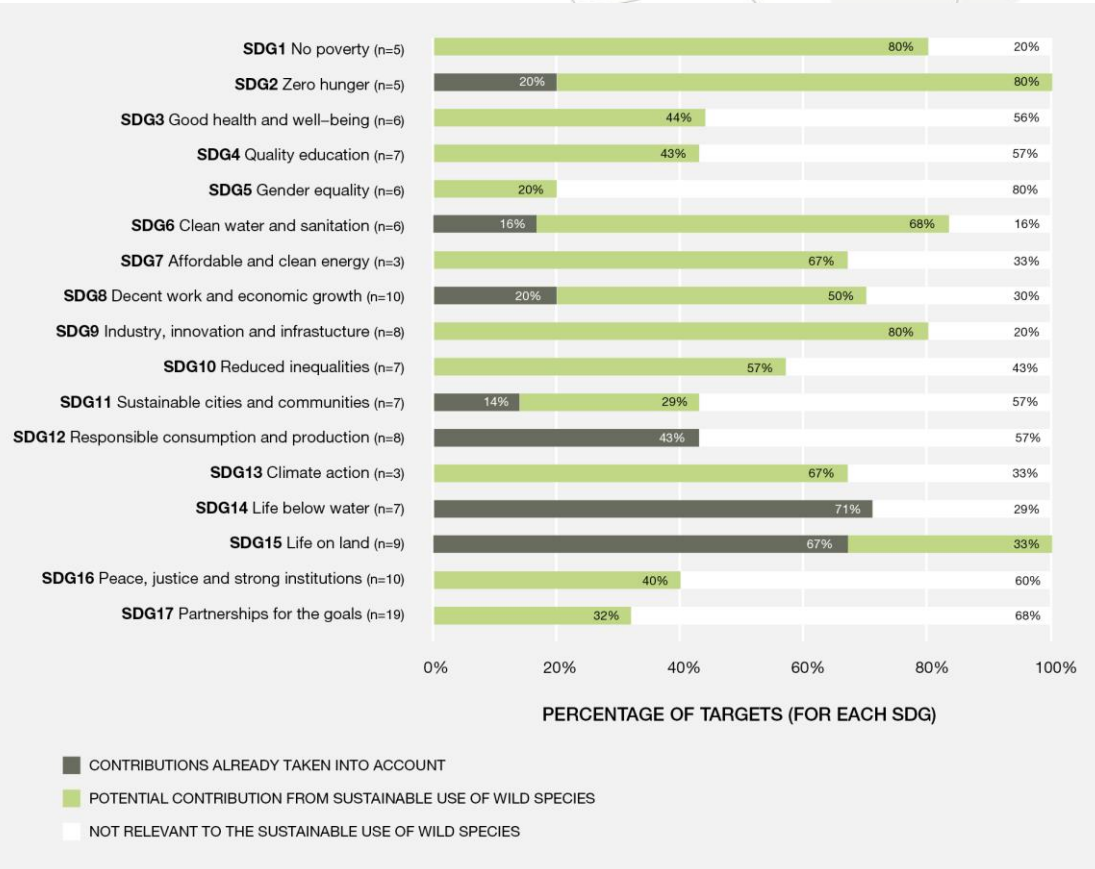
2.4 Billion People (1 in 3) Depend on **Fuel Wood for Cooking**



Describes the diverse uses of wild species and associated practices












Explores what 'sustainable use' entails and how it relates to the UN Sustainable Development Goals



Practice	Use category	20-years global trends		Comments	Chapter section
		use	sustainable use		

FISHING 	Food Feed			Corresponds to large scale fisheries with intensive management, data rich	3.3.1.2
				Corresponds to large scale fisheries with weak management, data limited	3.3.1.2
				Corresponds to small-scale fisheries, based on a range of sources	3.3.1.5.1
	Medicine Hygiene			Based on stock status and total weight of products	3.3.1.4.2
	Recreation			Data limited	3.3.1.5.3
GATHERING 	Food Feed			Based on a range of sources	3.3.2.3.4
	Medicine Hygiene			Based on population trends, threatened categories and CITES listing	3.3.2.3.5
	Decorative Aesthetic			Based on threatened categories and CITES listing	3.3.2.3.2
LOGGING 	Material Construction			Based on total legal wood removal	3.3.4.4.3
	Energy			Based on a range of sources	3.3.4.4.2
TERRRESTRIAL - ANIMAL HARVESTING 	Recreation			Based on population trends, threatened categories and CITES listing	3.3.3.2.4
	Food - Feed			Based on increasing demand of wild meat in commercial markets, population trends	3.3.3.3.3
NON-EXTRACTIVE PRACTICES 	Recreation			Based on number of tourism revenue generated	3.3.5.2.4
	Ceremony Ritual			Data limited	3.3.5.2.1
	Medicine Hygiene			Data limited	3.3.5.2.3

Assess status and trends in the use of wild species

	WELL ESTABLISHED			STRONGLY OR SLIGHTLY INCREASING
	ESTABLISHED BUT INCOMPLETE			STRONGLY OR SLIGHTLY DECREASING
	UNRESOLVED			STABLE
	INCONCLUSIVE			HIGH VARIABILITY IN TRENDS



FISHING

GATHERING

LOGGING

TERRESTRIAL
ANIMAL
HARVESTING

NON-
EXTRACTIVE

Species
under Use



7,500



25,100



7,400

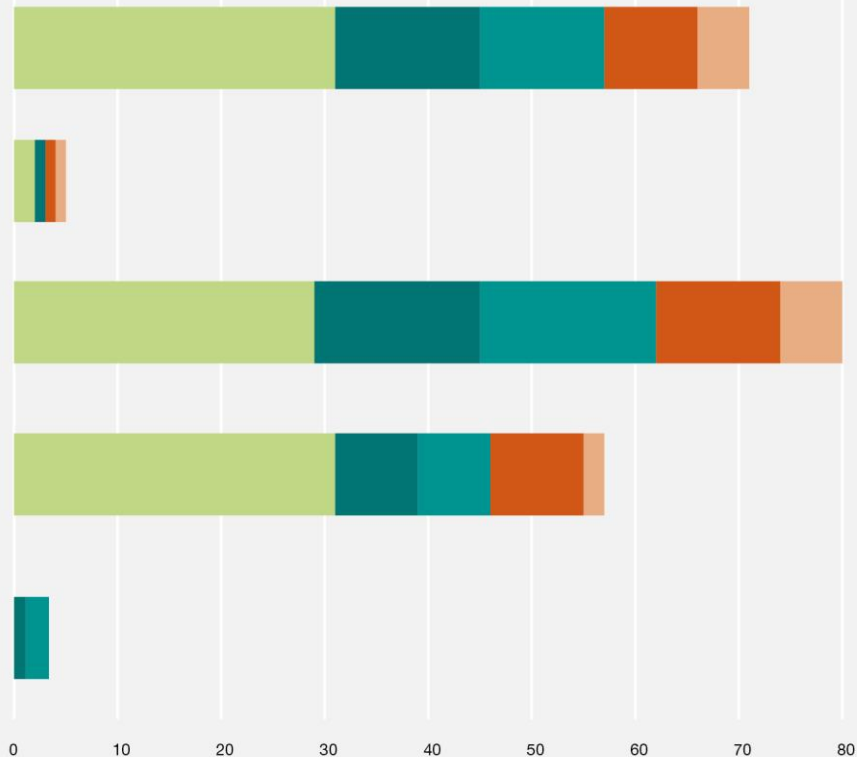


9,200



no data

INDICATORS



ECOLOGICAL
MANAGEMENT
ECONOMIC
GOVERNANCE
OTHER

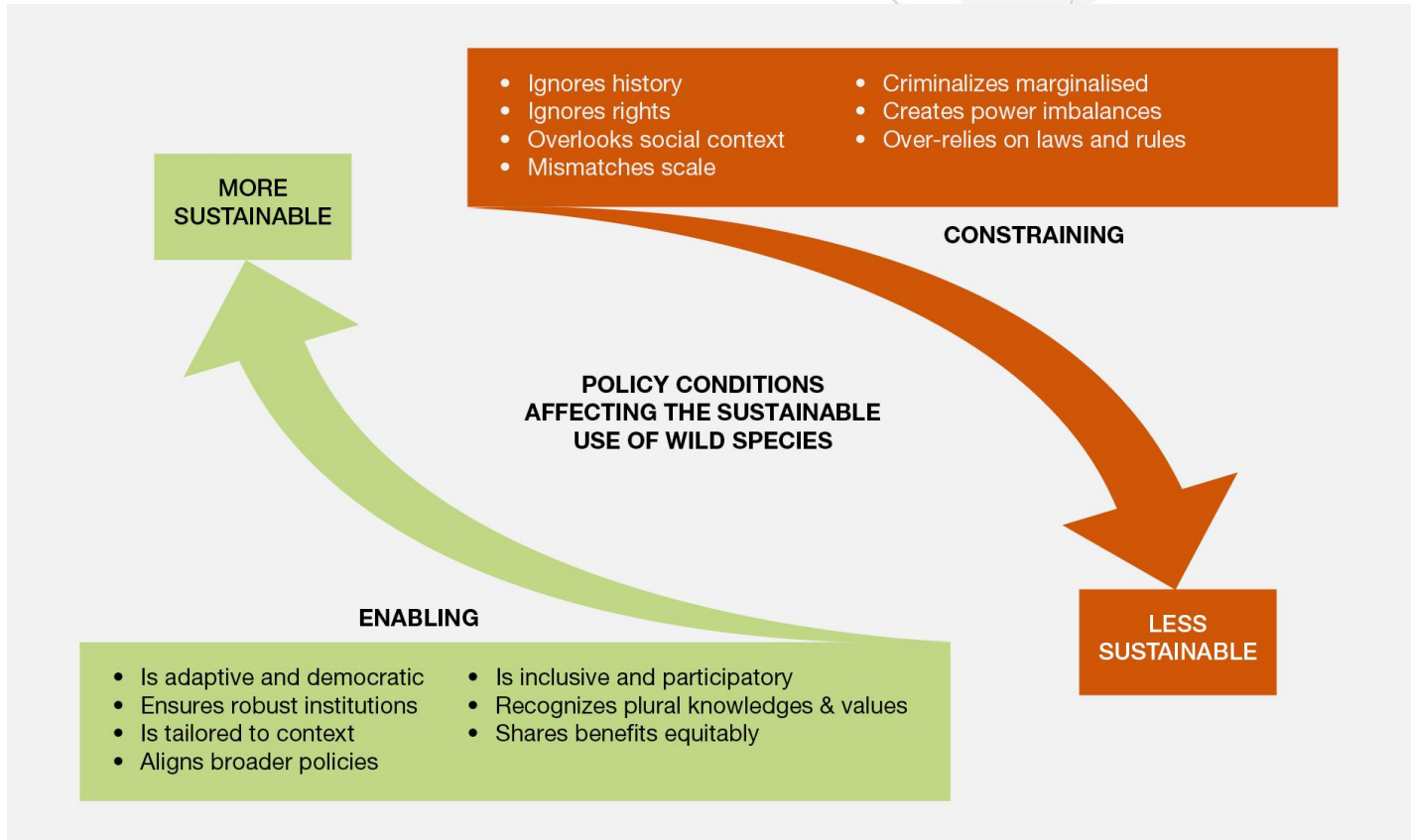
Assess status and trends in the use of wild species



Identifies the environmental and social drivers that enhance or undermine the sustainability of use

- **Environmental drivers** such as climate change, pollution and invasive alien species impact the abundance and distribution of wild species
- **Global trade** in wild species is a major driver and has expanded substantially over the past 40 years
- **Illegal harvesting and trade** in wild species involves numerous species and is the **third largest class of illegal trade**
- Lack of attention to **gender** and **equitable distribution of costs and benefits** undermine the sustainability of use
- **Effective governance, institutions, education and public awareness** can promote positive outcomes and mitigate negative impacts

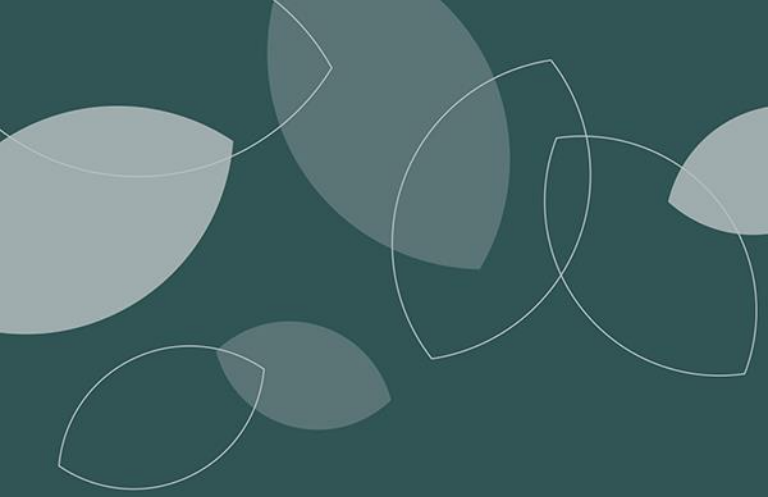
Identifies policy options & enabling conditions for sustainable use from national to global scales



Identifies 7 key elements & policy options to strengthen sustainable use of wild species

1. Strengthen **inclusive and participatory** decision-making
2. Recognize and support **multiple forms of knowledge**
3. Ensure **fair and equitable distribution of costs and benefits**
4. Tailor policies to **specific context**
5. **Monitor** wild species and practices
6. **Align policies** at international, national, regional and local levels
7. Support **robust institutions**, including customary institutions



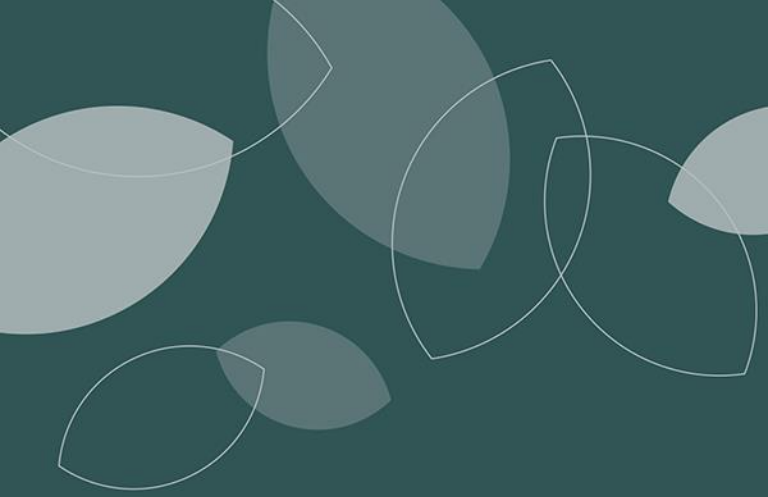


2. Expected impacts



- Provide **best-available evidence, analysis and options** for decision makers
- Contribute to the work of the **Convention on Biological Diversity (CBD)** and support the implementation of the post-2020 **global biodiversity framework**
- Contribute to **CITES' goal of ensuring international trade in wild species** does not threaten their survival in the wild
- Support implementation of the **Sustainable Development Goals**





3 ■ The Sustainable Use Team





Multidisciplinary teamwork

- **85 interdisciplinary experts** and more than 200 contributing authors
- Natural and social scientists

Diverse knowledge sources

- Literature review: peer-reviewed and grey literature
- Indigenous and local knowledge
- Draws on **more than 6,200 references**





#SustainableUse Assessment

Thank you!

¡Gracias!

Merci!