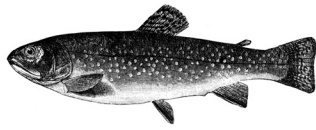


Stream Inhabitants

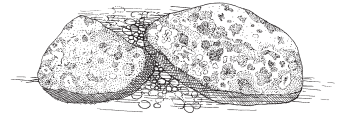
Cutthroat Trout, Brook Trout

- Need very clean water with high levels of dissolved oxygen.
- Need colder water than many other fish.



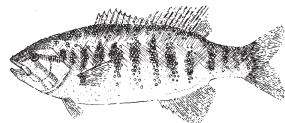
Spots of algae growing on rocks

- Found in many water conditions from cold to warm, including fast-moving water.



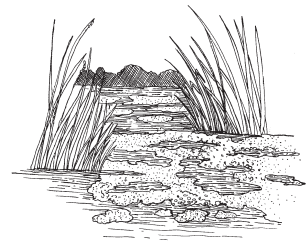
Rainbow Trout, Brown Trout, Smallmouth Bass, suckers, whitefish

- Need relatively clean water.
- Can tolerate somewhat warmer water temperatures than cutthroat and Brook Trout.



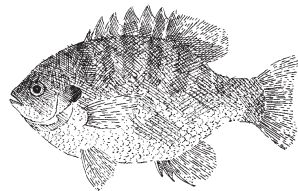
Large beds and floating mats of algae

- Generally require slow-moving or stagnant water.
- Encouraged by high nutrient levels in the water.



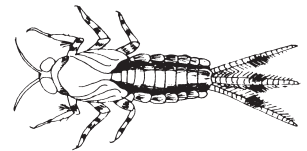
Carp, chub, shiners, sunfish

- Pollution tolerant.
- Prefer warmer, slower-moving water than other types of fish.



Mayfly, caddisfly, and stonefly nymphs; gilled snails; adult riffle beetles; hellgramites (dobsonfly larvae)

- Pollution sensitive.
- Need good to excellent water quality.



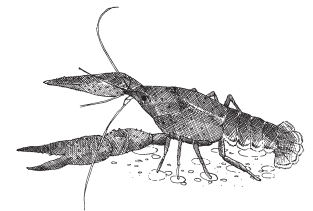
Eelgrass, elodea, and other types of rooted aquatic plants

- Unlikely to grow in fast-moving water.



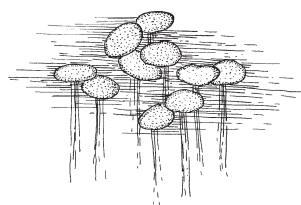
Crayfish, riffle beetle and cranefly larvae, dragonfly and damselfly nymphs, clams and mussels

- Somewhat pollution tolerant.
- Need fair water quality to survive.



Duckweed, water lily, and other types of floating aquatic vegetation

- Need slow-moving, sometimes even stagnant water



Midge fly and blackfly larvae, leeches, aquatic worms, lunged snails

- Pollution tolerant.
- Can survive in water of poor quality.

