

First Impressions

Directions: Create a graph similar to diagram A below. You may use chart paper and a marking pen or you may opt to use a pocket chart, if available. For very young children, focusing on one animal at a time and using graphing units is preferable. For older children you might choose to use tally marks and include more than one animal on the same graph. A finished graph for very young children may appear similar to Diagram B.

How do you feel?



Diagram A

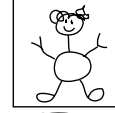
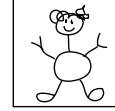
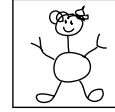
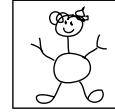
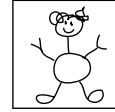
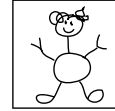
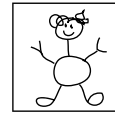
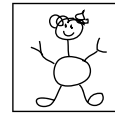


Bat

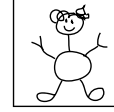
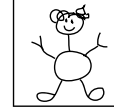
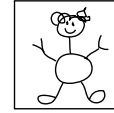
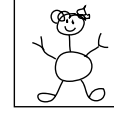
How do you feel?



1



8



4

Diagram B

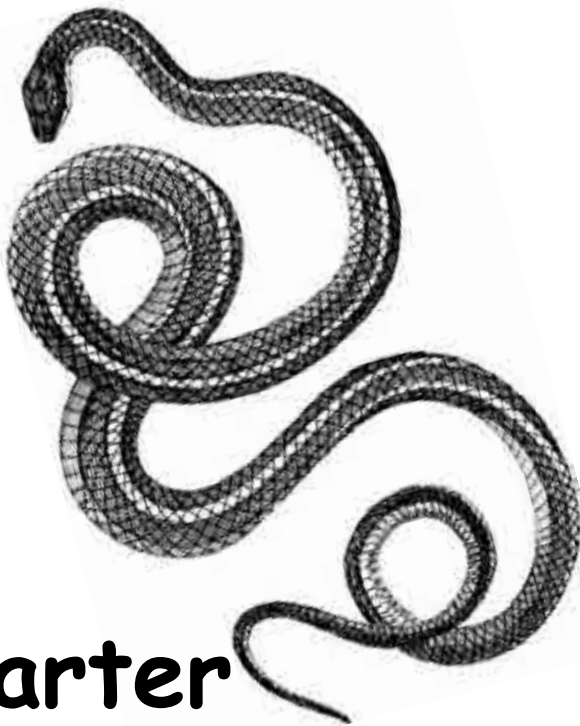
Animal Cards



**American
Robin**

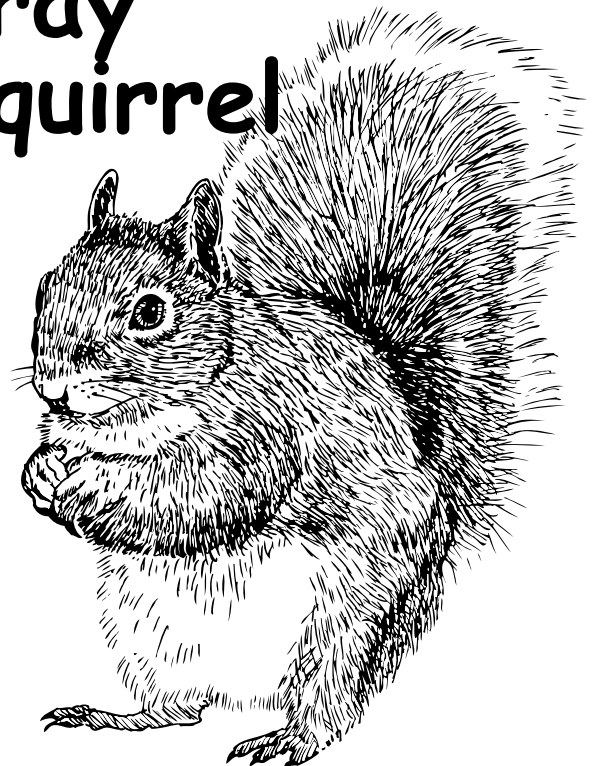


Leopard Frog



**Garter
Snake**

**Gray
Squirrel**

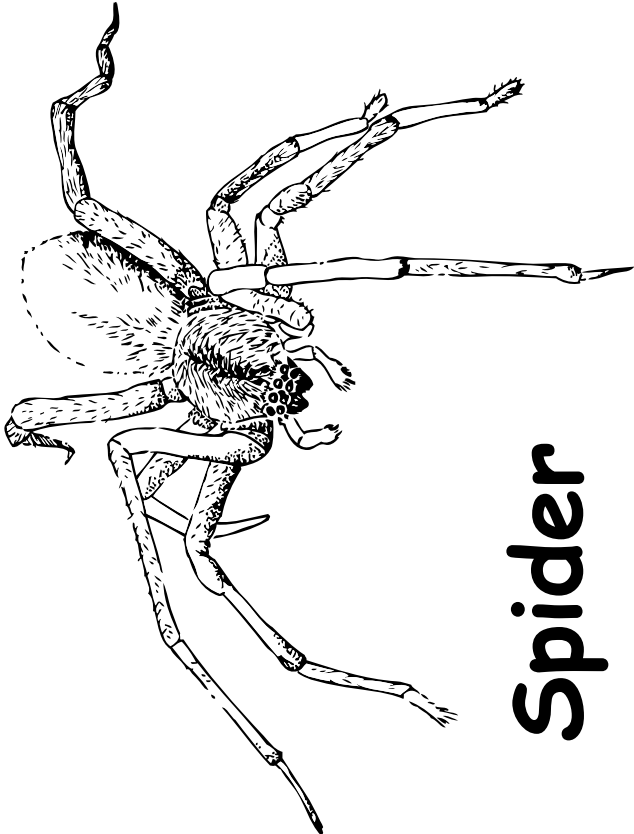


Animal Cards

Screech Owl



Bat



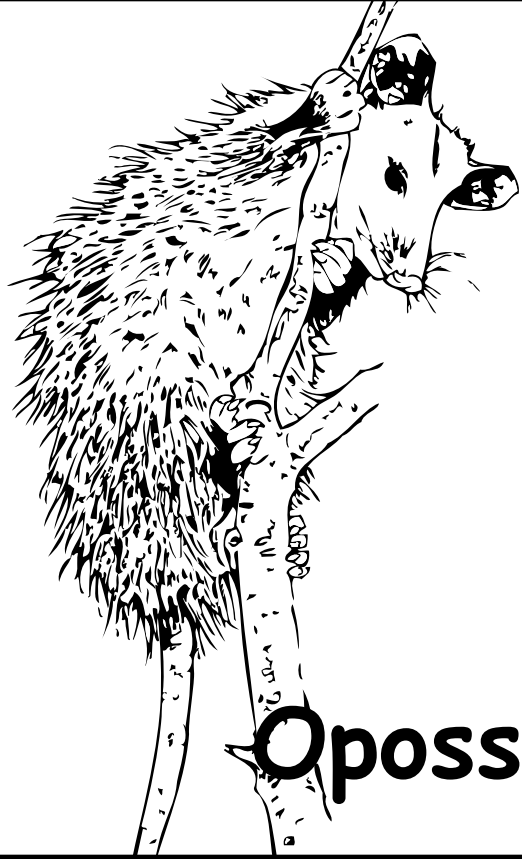
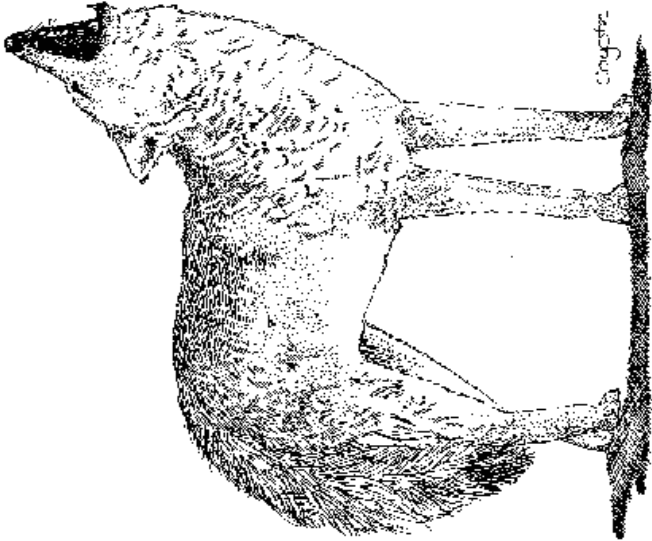
Spider

Cottontail Rabbit

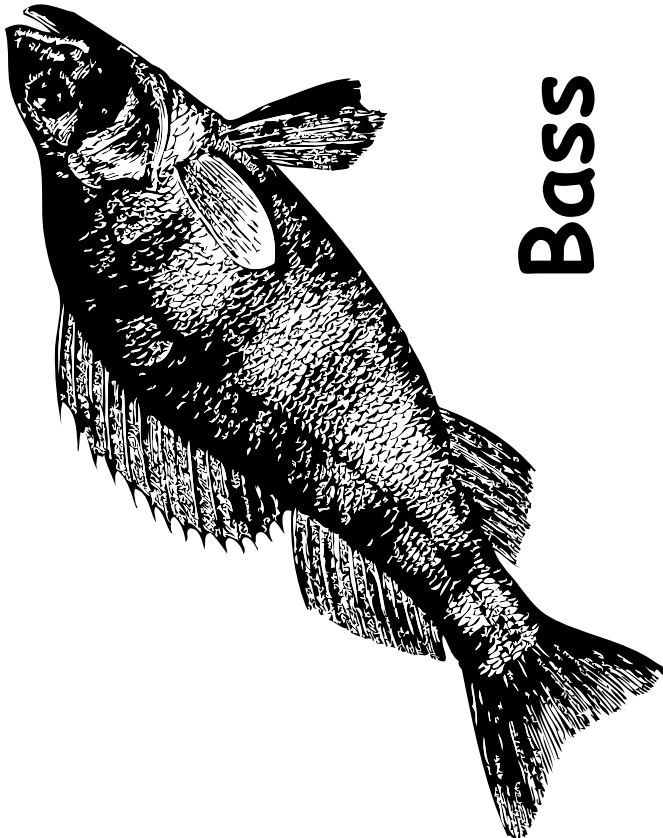


Animal Cards

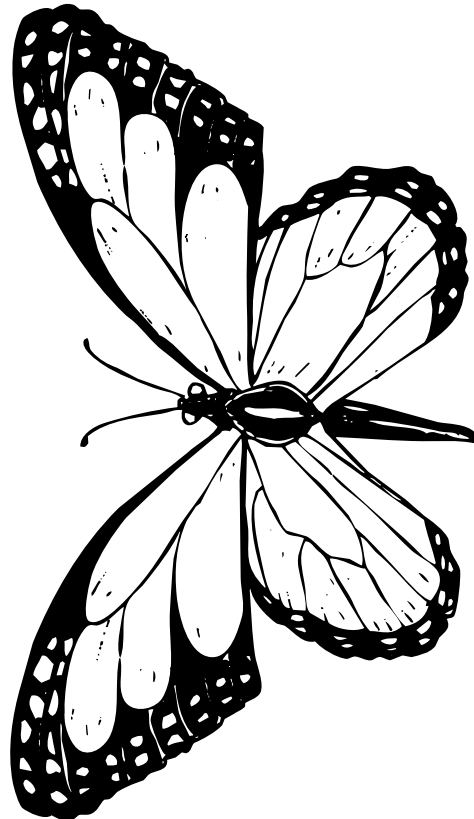
Coyote



Opossum



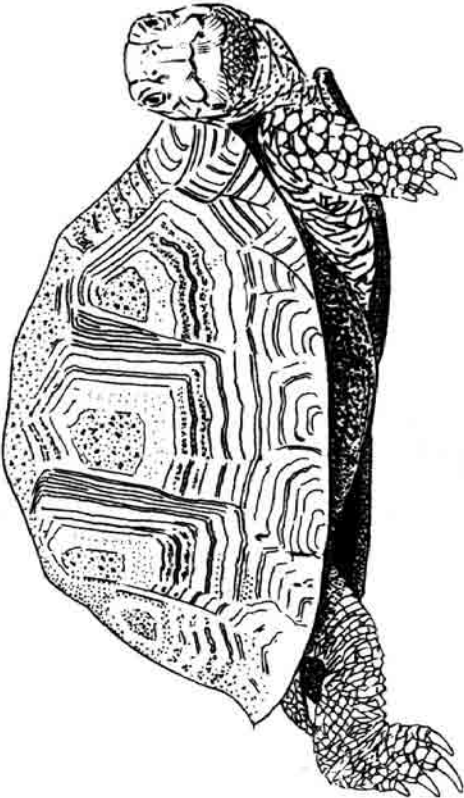
Bass



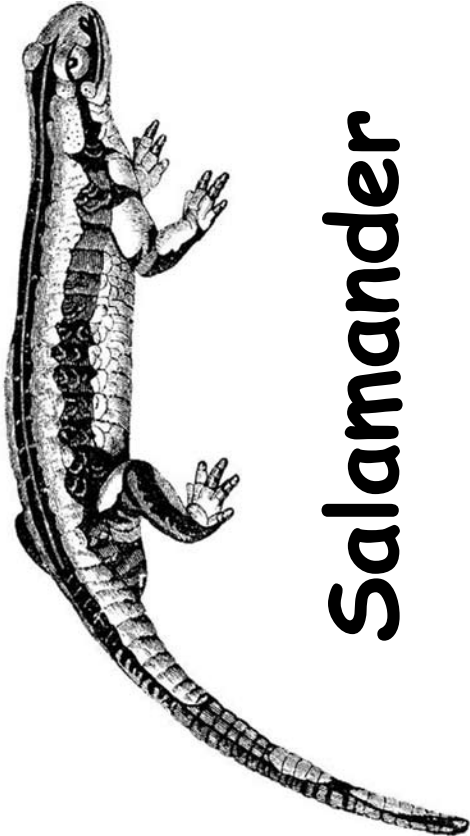
Monarch Butterfly

Animal Cards

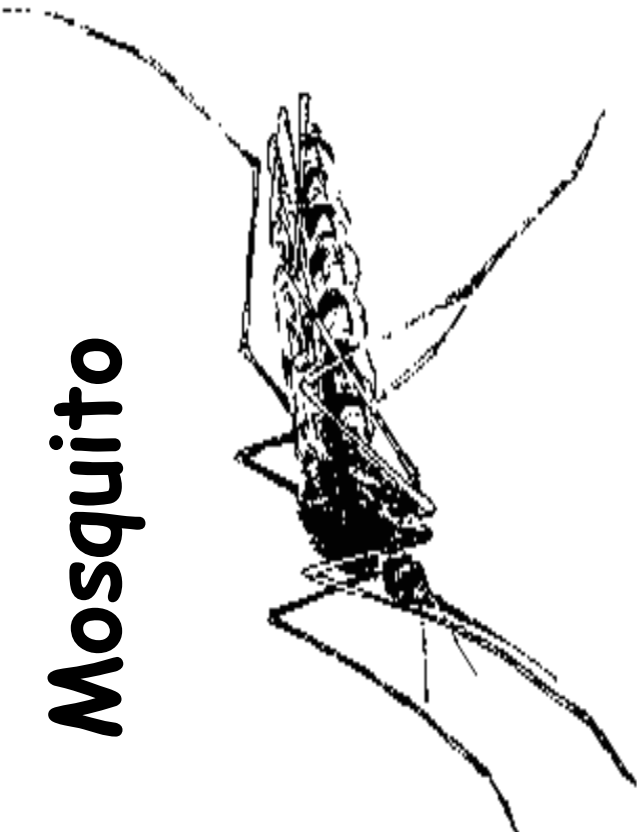
Box Turtle



Salamander



Mosquito

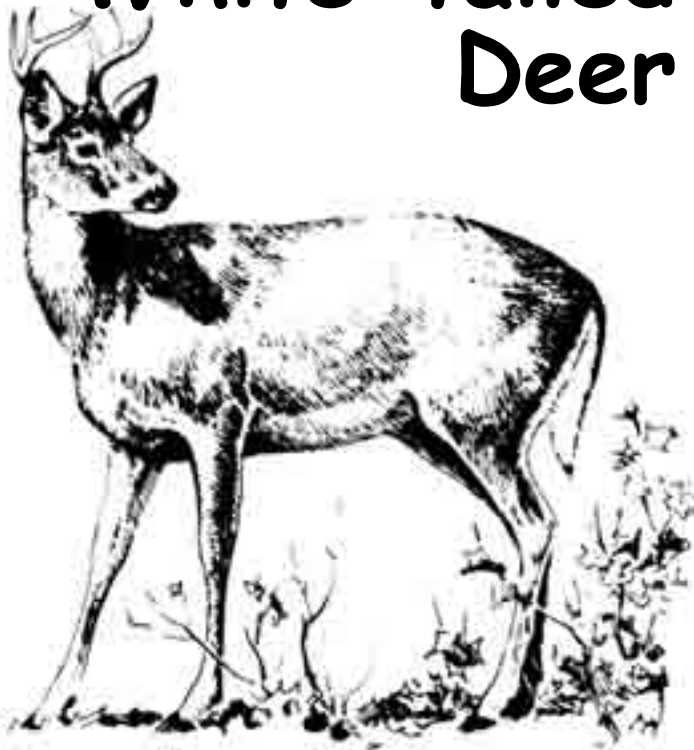


Black Bear

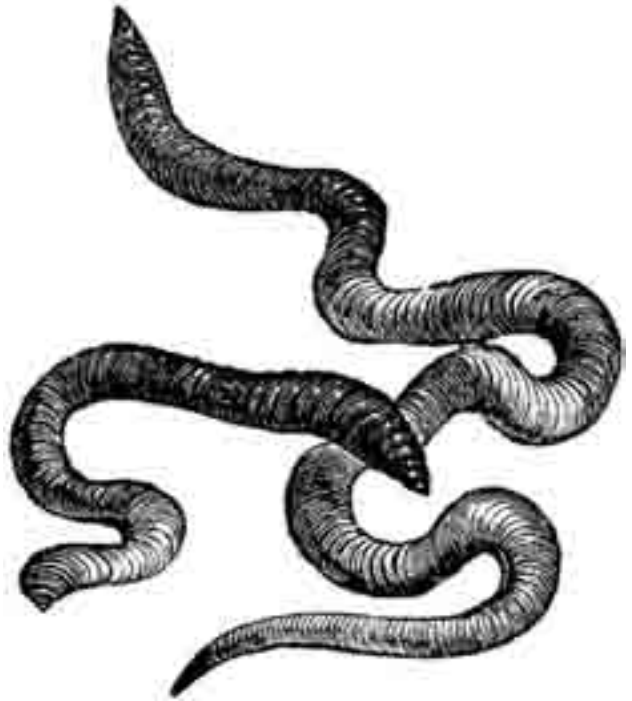


Animal Cards

White-tailed Deer



Earthworms



Lizard

Pigeon



Animal Cards

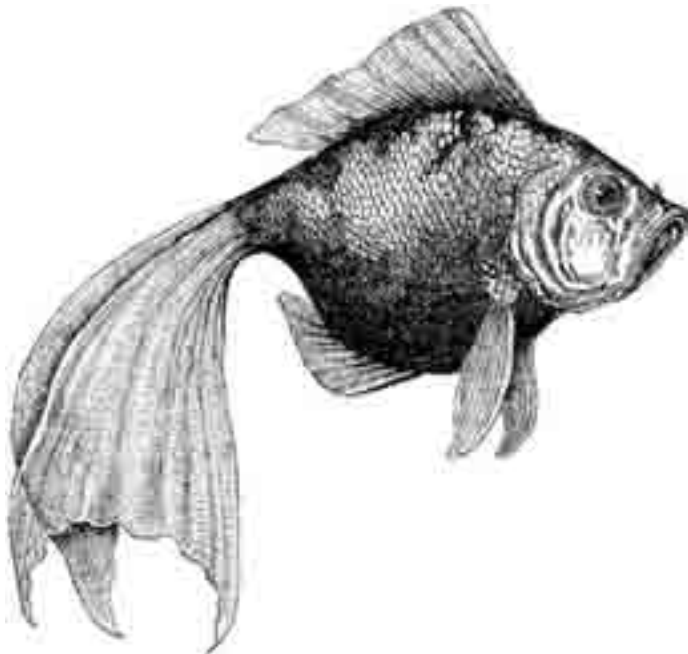


Parakeet



Dog

Goldfish



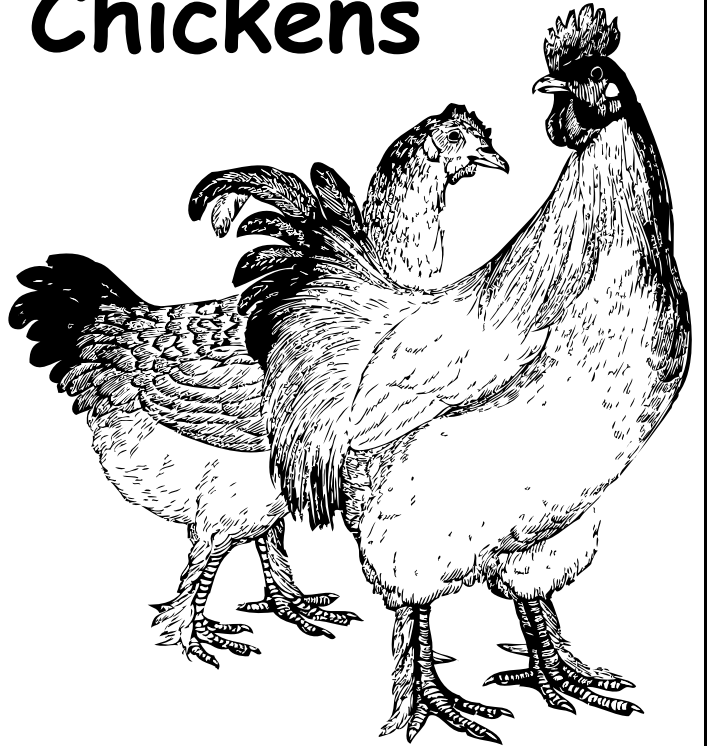
Cat

Animal Cards



Pig

Chickens



Horse



Cow