



# CASE STUDY

## Maine Department of Inland Fisheries and Wildlife



ASSOCIATION of  
FISH & WILDLIFE  
AGENCIES

### Private Lands Working Group

Agriculture Conservation Committee



## STATE AGENCY PRIVATE LANDS PROGRAM CASE-STUDY

The **Maine Department of Inland Fisheries and Wildlife (MIFW)** private lands program was initiated in 2020. Private lands program delivery in Maine is housed within the Beginning with Habitat Program, which is the primary program that provides municipalities, land trusts, and landowners with planning assistance. Of the staff, only the Private Lands Wildlife Biologist focuses primarily on providing technical assistance to private landowners. In addition, there are two-three regional wildlife biologist with limited capacity to provide assistance, and the Outdoor Partners program. This program is an incentive program to keep private land open for public use and consists of two corporals and five deputy (part-time) game wardens. The Private Lands Wildlife biologist works with the landowner relations game wardens to connect with folks who are additionally seeking technical service regarding fish and wildlife habitat management.

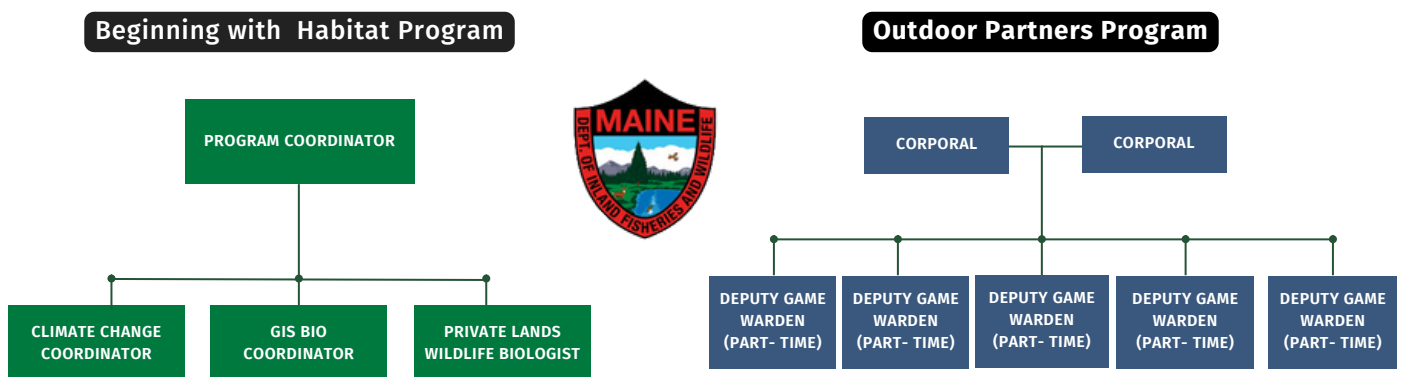


Figure. Private Lands Program Organizational Charts

# STATE AGENCY PRIVATE LANDS PROGRAM CASE-STUDY: MAINE

## PRIMARY PARTNERS

- National Resource Conservation Service
- Environmental Quality Incentives Program
- USFWS Partners for Private Land
- Maine Forest Service
- New England Forestry Foundation
- Ag Allies
- Maine Audubon
- Duck Unlimited
- Ruffed Grouse Society
- American Woodcock Society
- Maine Woodland Owners Association
- Local Land Trusts: ~100 land trust



## PRIMARY FUNDING

- Pittman-Robertson funds



## PRIMARY PROGRAMS

- USDA- National Resource Conservation Service (NRCS) Environmental Quality Incentives Program (EQIP)



## PRIMARY MARKETING AND ENGAGEMENT STRATEGIES YOUR AGENCY USES TO ENGAGE PRIVATE LANDOWNERS

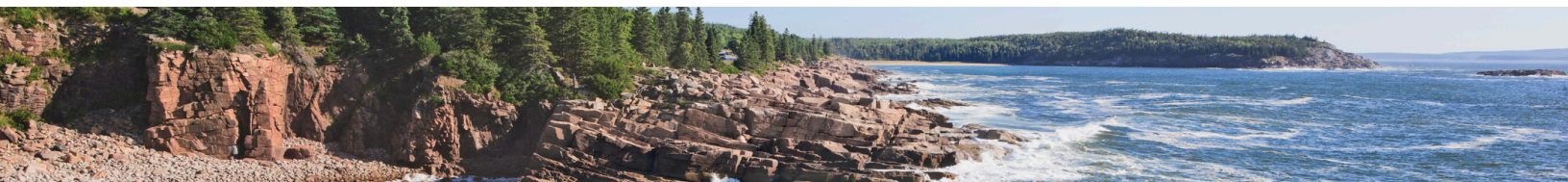
The agency has a well-developed Information and Education section that manages outreach and education across the agency. This includes short form and long form video content, social media posts, and podcasts.

## MAINE PRIVATE LANDS CONSERVATION EFFORTS: WHAT WORKS?

- Engaging with partners on outreach and education
- Review of forest management plans for partners and landowners
- Supporting partner work on the landscape with the time of the private lands biologist
- Directing partners to funding opportunities and writing letters of support.

## MAINE PRIVATE LANDS CONSERVATION EFFORTS: CHALLENGES?

- Staff capacity
- Limited staff
- Lack of knowledge and experience
- Lack state level financial assistance opportunities



## Supporting Information

Ag Allies: <https://www.somersetswcd.org/ag-allies/>

Beginning with Habitat: <https://www.maine.gov/ifw/fish-wildlife/wildlife/beginning-with-habitat/contact.html>

Outdoor Partners Program: <https://www.maine.gov/ifw/programs-resources/outdoor-partners-program/index.html>

### FOR MORE INFORMATION CONTACT:

Will Newman, [William.Newman@tpwd.texas.gov](mailto:William.Newman@tpwd.texas.gov)  
Ray Aberle, [Raymond.aberle@state.co.us](mailto:Raymond.aberle@state.co.us)

PRODUCT OF THE AFWA AGRICULTURE  
CONSERVATION COMMITTEE  
PRIVATE LANDS WORKING GROUP

